

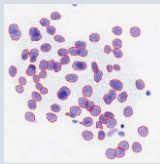


Partnerships and Applications in Healthcare and Biology

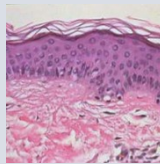
Since its inception, ADCIS (Advanced Concepts in Imaging Software) has been building partnerships with research laboratories, health care centers, and with leading pharmaceutical and cosmetics companies. These partnerships include industrial and research projects such as TeleOphta, RetinOpTIC, and RAMIS, where ADCIS has developed its image processing and analysis expertise in health-related fields. During the past few years this expertise has expanded to include databases interfacing for clinical studies, application of Deep Learning techniques, and improved medical diagnostics by Artificial Intelligence.

ADCIS expertise in image processing and image analysis is recognized and relied on by many companies for the development of their healthcare and biological software applications.

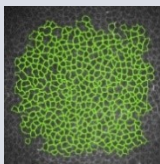
Application examples developed by ADCIS for its customers



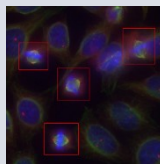
Cell extraction and classification in Cytology



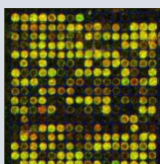
Automatic analysis of Histological slides



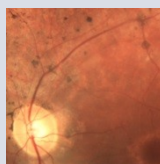
Automatic detection and count of Cornea cells



Discovery of innovative compounds inhibiting cell division



Analysis of DNA chips



Automatic grading of Diabetic Retinopathy



Automatic grading of Conjunctival Hyperemia and Redness in Ocular surface

They have put their trust in ADCIS

Alcon Laboratories
Allergan
ANSES
Bio-Rad
Assistance Publique et
Hôpitaux de Paris
Research centers in the field
of oncology
INSERM
Institut Gustave Roussy
Lilly
L'Oréal
Merck Biopharma
Novartis
Pfizer
Pierre Fabre
Procter and Gamble
University of Iowa



More information
available at
www.adcis.net
Europe: +33 231 062 300
USA: 877-664-8772

Expertise in the Healthcare and Biology fields:

- ↳ Cell counting, vessel network detection, structure analysis, and more
- ↳ Quantitative measurements and analysis
- ↳ Multimodal analysis and monitoring over time of biological processes
- ↳ Artificial Intelligence and Deep Learning
- ↳ Acquisition device interfacing (Cameras, Optical microscopes, Scanning electron microscopes, Digital slide scanner)
- ↳ Database interfacing for experimental and clinical studies
- ↳ Annotation software tools for building training database, and then classification based on Deep learning techniques
- ↳ Deep Learning software tools for detection and classification